



Early Years at Lisburne School



The EYFS Department

Here at Lisburne, we cater for children with a range of complex learning needs. These include moderate, severe or profound learning difficulties and autistic spectrum disorders. Each child has their own EHC plan.

The Early Years department has 26 children for the academic year 2018-19. There are 18 reception age children and 8 Year 1 children.

Reception and Year 1 children are taught together in mixed age groups for all activities. This mixed age grouping is a positive aspect of our provision, helping Reception children to learn from good modelling by Year 1 children. Year 1 children also gain confidence and mature socially and emotionally during this second year in the Early Years. At the end of Year 1 they are ready to transition to the next stage of their education.

Our ethos runs in-line with the EYFS ethos of '*development matters*' recognising that all children develop at different rates, as a result, our children are catered for on an individual basis.

These positive relationships encourage children to explore and show curiosity. They show persistence and enjoy new challenges. Independence is promoted by uninterrupted play sessions, staff, resources which are accessible and responsibilities given to children.

Every effort is made to keep children safe within school and for them to feel secure and looked after. Our children benefit from having a special person they can rely on and turn to for security.

Staffing

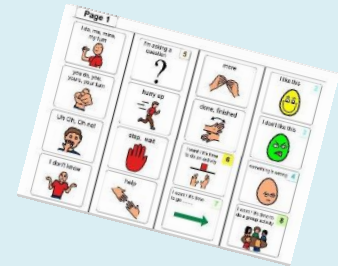
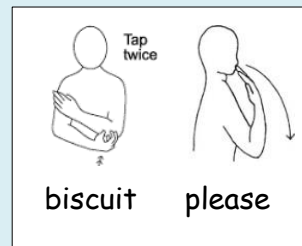
The staff team consists of two teachers, one HLTA, two trainee HLTAs and ten TAs. The lead teacher in EYFS oversees the development of all aspects of the department.





Communication

Communication is promoted in all areas of learning in the Early Years. Staff work closely with SALT (Speech and Language Therapists) and all staff are trained to use strategies such as timelines, Makaton, picture exchange (PECS) and individual communication plans. Children also take part in individual and group sessions with SALT.



Flexible Space

This year the Early Years department has been expanded and has moved into a new site at Hollywood Nursery.

This has been a wonderful opportunity to develop several spaces within the building. We have a main hall area, light room, creative room, low distraction teaching area and a soft play room.

These different areas have been designed with the idea of flexibility, so that they can be used for our children to engage in a range of activities both independently and in groups with staff. We are able to provide high quality indoor and outdoor learning experiences for our children where they can explore, build, move and role play.

Activities and Experiences

All our children experience a range of activities as part of the EYF5 curriculum. We have regular opportunities to go out of school, including planned visits linked to topics, swimming, life skills, walks in the local environment and Forest School.

All activities are rigorously risk assessed and planned to challenge and help pupils to progress to the next level in their development and take individual interests into account. Planning is linked to the seasons and celebrations throughout the year but we also follow the topic themes in school which have a two-year cycle.





Year 1	Year 2
Autumn - Food	Autumn - People
Spring - Buildings	Spring - Weather
Summer - Transport	Summer - Colour

Literacy sessions include phonics, writing experiences and reading. Children who are able to begin reading have individual reading scheme books which are closely monitored and read in school and at home.

Maths is taught through practical activities in number and shape space and measure through games in small groups and individual activities. Resources for maths are accessible for pupils at all times to reinforce the activities done in groups.

Specialised Group Sessions

Our children take part in specialised group sessions including TAC PAC, Intensive Interaction, Food Tasting and Sensory Stories. These activities are a strength of the provision we offer and help children to improve their achievement in all areas of learning.

Our children also have individual and group sessions of SALT and OT and individual sessions of physiotherapy. These specialised activities further enhance the provision we offer.

Whole School Events

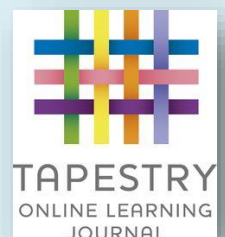
Children in EYFS take an active part in whole school events, such as Anti-bullying Day, World Book Day and Red Nose Day. All these special activities help the children to feel part of the wider school environment. We also run a Creative week each term and invite parents and carers in to school to join their children in a Wow morning.

Technology

Teachers and staff make every effort to keep up to date with technology and make this available to pupils in their teaching practice.

iPads are now used in activities and appropriate apps acquired regularly. Children also have access to Smartboards and touchscreen computers.

Activities are observed and recorded with annotated photographic evidence on Tapestry.





Home School Links

When children have been allocated a place in Reception, one of our Family Liaison Assistants (FLAs) will make a home visit to gather and share information with parents and carers, this work is invaluable when developing home school links.



Karen



Fiona



Linzi

Parents and children are invited to several play sessions during the Summer Term and these sessions are also attended by Year 1 parents who can socialise and talk to the new parents. This has proved to be very popular over previous years.

During the first month of school, teachers and HLTAs make home visits to introduce themselves and talk about EYFS, assessments, contact, routines and expectations.

There is a welcoming 'open door' policy to all parents and carers. Those children who are brought to school by parents come the playground gate each morning, where several members of staff are available to greet them.

In the afternoons, the children are handed over safely to their parents/carers in the playground and members of staff/key workers will talk about the child's day and what they have been doing.

Parents are contacted regularly by text, e mail or phone.



Sharing books and reading scheme books are sent home and returned each week. An Early Years newsletter is sent home weekly on Tapestry. Photos of activities and useful website links are put on the website.

